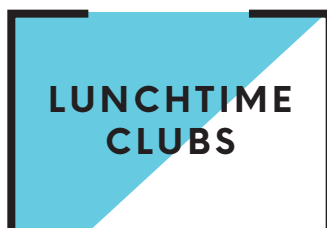
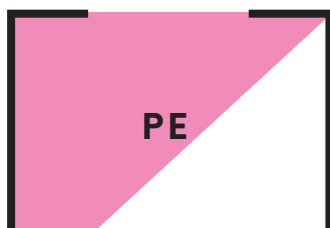




# Primary PPA Cover



# ABOUT US



Let's Leap has been a real partner in the growth of our school. The staff are both friendly and experienced, which is a great combination to work with. Their payment options are flexible and responsive to the needs of our community and align with the busy schedules of our school. From start to finish, their service has been flawless. The team is motivated, happy and the children love them! This is a highly professional and organised provision for children from 3-11, meeting the needs of every child through activities, snacks and fun! We are so lucky to have them working with our school!



Jeremy Hannay  
Headteacher  
Three Bridges Primary School



Everything we do at Let's Leap is about assisting schools to ensure every child receives an engaging and enriching PE programme.

We follow a fine tuned safer recruitment process to ensure that every Let's Leap member of staff delivers safe, age-appropriate, fun and educational activities supporting children's passion for lifelong learning & adventure.

Our child centred approach serves to improve confidence, independence, cognitive understanding, developing the whole child, improving schools and enriching communities.

---




Let's Leap Team



# PE

Inclusive, engaging and progressive PE lessons that improve whole school performance.

Looking for a high impact PE provision that will:

-  Inspire and engage your pupils
-  Develop confidence and critical thinking
-  Raise the profile of PE in your school

Engaging PE lessons improve physical and cognitive skills, helping your pupils become intelligent performers, both in and out of the classroom.

*How will a let's leap pe provision benefit my school?*

## Let's leap pe teachers will:

Deliver inclusive, engaging and cross-curricular lessons

Develop physical literacy and pupil well-being

Differentiate effectively to ensure all pupils make progress

Raise the profile of PE and school sport beyond the curriculum

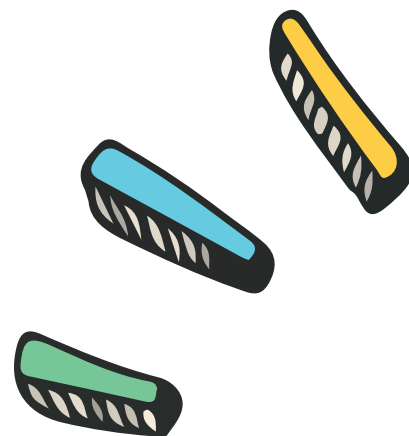
## Let's leap will support your school to:

Measure the impact of PE and school sport funding

Increase participation in clubs and competitions

Up-skill class teachers in delivering PE

Ensure all children are active for at least 60 minutes a day



Your school will benefit in many ways by partnering  
with Let's Leap Sports Academy

#### **A well-rounded education**

PE specialists passionate about providing your pupils with a well-rounded education

#### **Quality teachers**

All Let's Leap teachers are employed following a successful Let's Leap demonstration & 3 day training programme

#### **Fully vetted**

All Let's Leap teachers completed annual safeguarding, vetting & barring, DBS, reference checks, Prevent and KCSIE

#### **Save time**

Guaranteed peace of mind, knowing Let's Leap will provide full

#### **Ongoing training**

Let's Leap teachers complete termly professional development, ensuring they effectively lead their specialist subject in your school

#### **Absences? covered!**

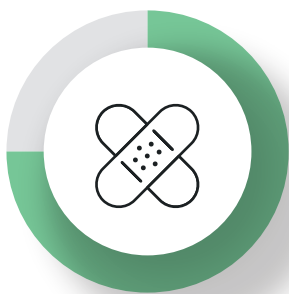
In the event of illness, a Let's Leap teacher will be on hand to cover the lessons at no additional costs to the school

# LUNCHTIME CLUBS

Let's Leap's qualified team can provide zoned playground activities to provide structure and increase pupil participation by offering different activities during lunchtime.

*We can also provide training that will up-skill SMSAs, TAs and lunchtime staff*

Giving them the skills and confidence to deliver safe and effective lunchtime activities.



75%

reduction in reported incidents and accidents at lunchtime



88%

pupils active for more than 60 minutes every day



90%

of SMSAs up-skilled to deliver games and activities at lunchtimes



100%

pupils happier and healthier due to ongoing lunchtime engagement

# AFTER SCHOOL CLUBS



**let's leap**

**Creative KIDS CLUB**

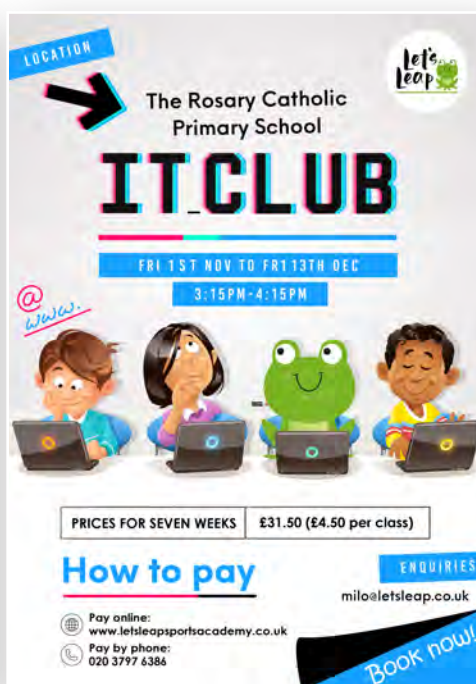
**LOCATION**  
The Rosary Catholic Primary School

**WED 27TH OCT TO WED 8TH DEC**  
3:15PM-4:15PM

**PRICES FOR SEVEN WEEKS** £31.50 (£4.50 per class)

**HOW TO PAY**  
Pay online: [www.letsleapsportsacademy.co.uk](http://www.letsleapsportsacademy.co.uk)  
Pay by phone: 020 3797 6386

**ENQUIRIES**  
[milo@letsleap.co.uk](mailto:milo@letsleap.co.uk)



**let's leap**

**IT CLUB**

**LOCATION**  
The Rosary Catholic Primary School

**FRI 1ST NOV TO FRI 13TH DEC**  
3:15PM-4:15PM

**PRICES FOR SEVEN WEEKS** £31.50 (£4.50 per class)

**How to pay**  
Pay online: [www.letsleapsportsacademy.co.uk](http://www.letsleapsportsacademy.co.uk)  
Pay by phone: 020 3797 6386

**ENQUIRIES**  
[milo@letsleap.co.uk](mailto:milo@letsleap.co.uk)

**Book now!**



**let's leap**

**Autumn Term DANCE CLUB**

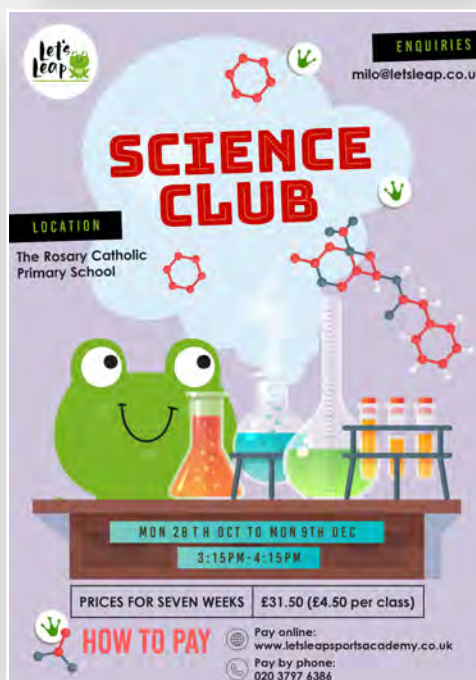
**TUE 29TH OCT TO TUE 10TH DEC**  
3:30PM-4:30PM

**LOCATION**  
The Rosary Catholic Primary School

**PRICES**  
SEVEN WEEKS £31.50 (£4.50 PER CLASS)

**HOW TO PAY**  
Pay online: [www.letsleapsportsacademy.co.uk](http://www.letsleapsportsacademy.co.uk)  
Pay by phone: 020 3797 6386

**ENQUIRIES**  
[milo@letsleap.co.uk](mailto:milo@letsleap.co.uk)



**let's leap**

**SCIENCE CLUB**

**LOCATION**  
The Rosary Catholic Primary School

**MON 28TH OCT TO MON 9TH DEC**  
3:15PM-4:15PM

**PRICES FOR SEVEN WEEKS** £31.50 (£4.50 per class)

**HOW TO PAY**  
Pay online: [www.letsleapsportsacademy.co.uk](http://www.letsleapsportsacademy.co.uk)  
Pay by phone: 020 3797 6386

**ENQUIRIES**  
[milo@letsleap.co.uk](mailto:milo@letsleap.co.uk)

We also offer a wide range of after school clubs for children of all abilities, with an emphasis on engagement – not competition. We want everybody to join in, have fun, and try to beat their own personal best in a fun and safe environment. Our activities range from gymnastics, dance to science and IT, so there's something for every child.

## Contact us:

[milo@letsleap.co.uk](mailto:milo@letsleap.co.uk)  
020 3797 6386



# Process Towards Achieving Excellence...



## CONTACT

Contact Milo at  
Leat's Leap  
Sports Academy  
to discuss your  
requirements...



## IDENTIFY

Milo will  
identify skilled  
teachers who  
meet your  
school vision...



## OBSERVE

Observe your  
proposed  
teacher(s) deliver  
lessons in your  
school...



## PROGRESS

Watch your pupils  
thrive in an  
engaging and  
enriching PE  
programme

